

MC MISSISSIPPI COLLEGE SCHOOL OF BUSINESS / FALL 2011

BUSINESS



MISSISSIPPI COLLEGE
SCHOOL OF BUSINESS

POST OFFICE BOX 4014
CLINTON, MS 39058
601.925.3214
mcbusiness@mc.edu

DEAN
Marcelo Eduardo

DIRECTOR OF
DEVELOPMENT
Katrina Pace

EDITOR
Chad Phillips

STUDENT EDITOR
Kadi Stewart

DESIGNER
Alecia Porch

PHOTOGRAPHY
Robby Followell

Welcome to the
School of Business 2



CEEA Update 3

Smart MC Business 4

A Faithful Investment 6



Executive Speaker Series 8

The Mississippi
Healthcare
Reform Summit 12



With Honor 14

Executive Excellence 20



Distinguished Service 24

Alumnus of the Year 26

Preparation for Success 28



Spotlight on the
Accelerated Degree Program 30

Join MC Business 32

Continued Excellence 34



Corporate Partner Spotlight 36



WELCOME to the SCHOOL OF BUSINESS

New Faculty

THE SCHOOL OF BUSINESS IS PLEASED TO WELCOME AWARD-WINNING professor and Mississippi Baptist leader, Dr. Billy Morehead, Ph.D., CGFM, CPA to the Mississippi College faculty. Morehead graduated with a Bachelor of Business degree in Accounting from Delta State University in 1984, a Master's Degree in Accountancy from Millsaps College in 1995, and a Ph.D. in International Development from the University of Southern Mississippi in 2007. He is a Certified Public Accountant, Certified Governmental Financial Manager and Certified Public Manager. A deacon at First Baptist Church Cleveland, Morehead and his wife, Audrey, are anxious to return to the metro Jackson area.

Morehead has 25 years of governmental financial management experience in the state of Mississippi. He has also served Mississippi Baptists as a member and the current chairman of the Education Commission for the past six years. He has been at Delta State University (DSU) in Cleveland, MS since the fall of 2000 and became the Chair of Accountancy, Computer Information Systems, and Finance and Assistant Professor of Accountancy in 2007. Dr. Morehead has served DSU in other roles including Vice President for Finance and Administration and Interim Dean of the College of Business. His skills as an Accountancy professor are well-recognized at Delta State. In May, Morehead received the

S.E. Kossman Outstanding Faculty Award during spring graduation ceremonies on the Cleveland campus. Prior to his work at Delta State, Morehead worked for the Mississippi Department of Mental Health (DMH) for 10 years as the CFO of two state hospital facilities. Before DMH, Dr. Morehead worked with the MS Department of Finance and Administration and the MS State Auditor's Office early in his state government career.

Dr. Morehead served as the 60th National President of the Association of Government Accountants (AGA) in 2009 and 2010. He has a long history of involvement in AGA having served as Senior Vice President for Regional Services, Section II (2001-2004), as National Treasurer in 1995-1996, as Regional Vice President for the South Central Regional in 1997-1998, and as the Jackson Chapter President in 1989-1990. He has been active in numerous national AGA committees and boards, including serving as Chair of International Development Committee and as a member of the Professional Ethics Board. Dr. Morehead has received several awards from AGA including the National Educator Award in 2007 and Presidential Awards in 1998 and 2007. He is also active in the Mississippi Society of CPAs, the American Institute of CPAs, and numerous other professional and civic organizations. We are delighted to have Dr. Morehead join our faculty.



DR. BILLY MOREHEAD graduated with a Bachelor of Business degree in Accounting from Delta State University in 1984, a Master's Degree in Accountancy from Millsaps College in 1995, and a Ph.D. in International Development from the University of Southern Mississippi in 2007. He is a Certified Public Accountant, Certified Governmental Financial Manager and Certified Public Manager.



CEEA UPDATE

Partnering with Educators and Business Leaders

IN 2011 THE CENTER FOR ECONOMIC EDUCATION AND ANALYSIS continued to build on a great start by hosting several events as well as launching the CEEA website.

CEEA has a two-fold mission. First, the center is focused on increasing economic education among K-12 students and teachers in Mississippi, and works to further this mission by partnering with the Mississippi Council on Economic Education (MCEE). Second, the center seeks to become the primary resource for state agencies, public companies and private sector organizations seeking economic analysis and data relating to the Jackson-metro area.

On the education front, two teachers completed the Master Teacher in Economics program by attending 5 course modules including Intro to Economics, Microeconomics, Macroeconomics, International Economics, and Personal Finance, and passing five rigorous written exams that correspond to each module. By having these requirements satisfied, they now will implement the economics modules in their classrooms and receive the coveted Mississippi Master Teacher in Economics designation. The MC Center is proud to be associated

with educating these teachers and equipping them to receive this elite designation.

In April, CEEA hosted the second International Summit at Anderson Hall with 350 high school students participating. In this visit to the MC campus, the high school student teams each represent a different country and work together as a team on projects representing real-world economic challenges facing their countries. This event at the MC CEEA was sponsored through a generous grant from the State Farm Community Foundation. To further expand the International Summit, the MC CEEA will host a two day teacher training seminar to reach new teachers who will bring new teams to future International Summit, allowing their students to participate in this worthwhile program.

As a partner to the local business community, the CEEA is becoming the primary source for economic data relating to the Jackson business community. With the inaugural newsletter for the center to be published this year, CEEA is establishing a presence in the business community. Please visit us at www.mc.edu/ceea for more information.

THE MC CENTER
IS PROUD TO BE
ASSOCIATED WITH
EDUCATING THESE
TEACHERS AND
EQUIPPING THEM TO
RECEIVE THIS ELITE
DESIGNATION.



THE CENTER IS FOCUSED ON increasing economic education among K-12 students and teachers in Mississippi, and works to further this mission by partnering with the Mississippi Council on Economic Education (MCEE). Second, the center seeks to become the primary resource for state agencies, public companies and private sector organizations seeking economic analysis and data relating to the JACKSON-METRO AREA.

SMART MC BUSINESS

NEW FINANCE MAJOR

Money and finance touch almost every aspect of business and life. The Finance program at MC is designed to give students a strong foundation in the principles and practices of finance – from financial analysis, to financial management, to investment strategies. Through a rigorous curriculum, students will develop the analytical and technical financial skills and tools needed for their career in finance and for informed financial decision-making.

NEW CAREER TRACKS

Business majors can use electives to deepen their understanding of specific industries by choosing from five specialized career tracks:

Advertising & Promotion

The Advertising & Promotion career track combines the study of graphic design, public relations, media sales and professional writing in preparation for entry into the professional world of advertising.

Entrepreneurship

The Entrepreneurship career track is ideally combined with a marketing degree to provide important skills and knowledge for students that intend to pursue their own businesses.

Pharmaceutical Sales

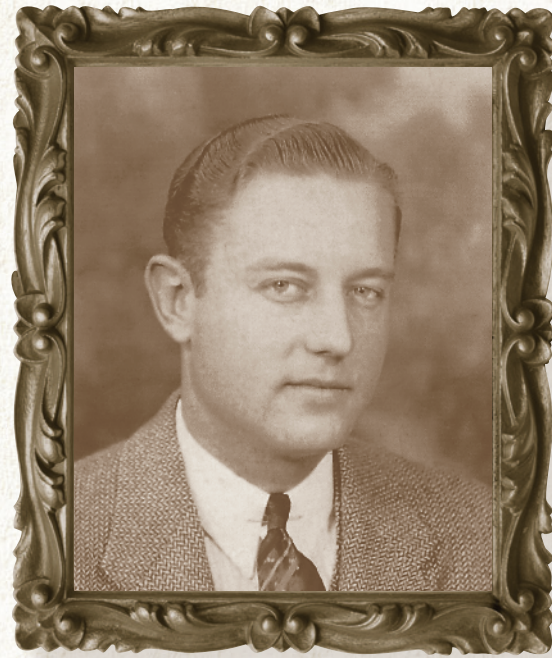
The Pharmaceutical Sales career track, combined with a marketing degree, provides the necessary background for students to be successful in the pharmaceutical sales profession.

Real Estate

The Real Estate career track provides the necessary knowledge and required hours for students to be eligible for Real Estate Certification.

Sports Management

The Sports Management career track is designed to combine liberal arts, kinesiology, and business in a curriculum focused on preparing individuals for careers in the sports industry.



A FAITHFUL

Investment

THE FRED E. KENNEDY BUSINESS SCHOLARSHIP

Fred Kennedy finished Magee High school in the spring of 1936. In the fall of that year with \$40.00 and much excitement, he left Magee, MS, with the intent of entering Mississippi College as a freshman. Dr. Nelson, the president of MC, met with him and asked him how much money he had for college. He said, "\$40.00." Dr. Nelson said, "Son, you can't go to college on \$40.00." Fred replied, "Well, you can start, can't you?"

He worked construction jobs, odd jobs during the school year and in the summer worked for his father in the construction business and was able to successfully graduate in the spring of 1939 with his original class.

He had a love and appreciation for MC that remained with him throughout his life. While at MC, he played on the football team and was a member of the M Club among other activities. He graduated with a degree in Business.

After graduation, he taught school and coached for two years and during this time, he met and fell in love with Lois Tullos from Magee. She was a student at Co-Lin Junior College and they were married. Their first home was Terry, Ms. where he taught Business in high school and was a coach.

In December of 1941, Pearl Harbor was bombed and after finishing the school year, he went to Camp Shelby, Ms. and joined the US Army. With an unquestionable love for his country, he was a World War II Army veteran serving with distinction as a Finance Officer in the South Pacific (Okinawa). He was a graduate of Officers' Candidate School and the Duke University Army Finance School in North Carolina. He was discharged with the rank of Captain.

After his discharge, he came back to Magee, Ms. and opened Fred E. Kennedy Real Estate & State Farm Insurance Company. He had an unrelenting love for people and expressed this through his generosity and love for others often helping families and those in need with no fanfare or public attention. He distinguished himself as

a leader and supporter of young people serving as the Director of the Young Peoples' Department of First Baptist Church in Magee for 20 years. He served as chairman of the Magee Public Schools Board and as an avid supporter of all youth activities in Magee and Simpson county. As an active member of the First Baptist Church of Magee, over the years he served as a Deacon, Director of the Adult School Department as well as the Young Peoples' Department, and the Building Committee during the first major expansion of the church. He was also the Outreach Leader of the church as well as the Simpson County Baptist Association.

Fred was a State Farm insurance Agent and a licensed Real Estate Agent. He was always active in community and business affairs and was responsible for the development of several residential subdivisions within the city and other areas of the county and state. He was the recipient of numerous citations and awards during his insurance and real estate career. He was a member of Life Underwriters Association of Jackson, a charter member of the Magee Chamber of Commerce, the Magee Lions Club and other civic organizations.

He and his wife, Lois, had a love for travel and along with their friends, family and insurance associates travelled extensively in Europe and Israel through the years. They took many trips around the United States, Mexico and the Caribbean. He was always an enthusiastic and curious traveler.

During a family vacation to the beach on July 24, 1989, he died as a result of injuries sustained in an automobile accident.

His wife, Lois, daughter, Donna Kennedy Barksdale, grandchildren, Jay Sones, Kennedy Sones and Megan Clapton will cherish his memory, love and guidance forever. His lasting legacy was a deep love of family, of others, of church and of God.

Lois established a memorial in Fred's honor to Mississippi College by funding and naming the Fred E. Kennedy Business Scholarship Fund. This is designed to continue to provide quality Christian education to students' majoring in Business.



MRS. LOIS KENNEDY and MC Business student TAYLOR STRINGER, the *first* recipient of the FRED E. KENNEDY BUSINESS SCHOLARSHIP

FRED KENNEDY had an *unrelenting love for people* and expressed this through his generosity and love for others often *helping families and those in need* with no fanfare or public attention.

Above: Photo and cover photo by Heather Bryant



EXECUTIVE SPEAKER SERIES

THE EXECUTIVE SPEAKER SERIES is designed to *challenge students to examine the business world through the eyes of faith. Students receive first-hand accounts of the consistency between a business career and faith from prominent members of the business community.*

LEFT: Joel Bomgar makes a presentation to MC Business Students.
ABOVE: Speakers included Joel Bomgar, Frank Harrison, Mike Huckabee and Todd Woods.



JOEL BOMGAR
Founder and Chief Executive Officer
 Bomgar Corporation

In 2003, while working his way through college as a systems engineer, Bomgar created the concept for his company's virtual support product, the Bomgar Box,™ as a way to provide help desk and technical support to disparate users without leaving his desk. Founded that same year, Bomgar Corporation has quickly grown to revenues in excess of \$30 million and continues to see double-digit revenue growth to this day.

As a graduate of Belhaven College, Mr. Bomgar used his experience working as a systems engineer at systems integrator Business Communications, Inc. (BCI) and his seven year tenure in the Mississippi Air National Guard supporting remote users to develop the technology that would later become the Bomgar Box.™

He credits his achievements in the business world to a discipline of focus and core values rooted in Biblical principles.

The entrepreneur Joel Bomgar supplied lots of helpful advice to hundreds of Mississippi College School of Business students at the Business School's Executive Speaker Series Event.

FRANK HARRISON
Chairman of the board and chief executive officer
 Coca-Cola Bottling Company Consolidated

J. Frank Harrison, III officially began his career with Coca-Cola Consolidated in 1977, but his roots in the Coca-Cola system date back to 1902, when his great-grandfather, J.B. Harrison first introduced Coca-Cola to the Carolinas. As a young college student, Harrison worked in a number of entry level positions including running routes and operating bottling lines.

He graduated from the University of North Carolina with a Bachelor of Science Degree in Business Administration, and in 1983 he obtained an MBA from Duke University. Since 1977, Harrison has served in a variety of operational and leadership roles throughout the company until becoming Chairman & CEO in 1996.

As the fourth generation family leader of what has become the nation's largest independent Coca-Cola bottler, Frank is focused on creating a culture of servant leaders whose values and actions honor God. While Coca-Cola Consolidated remains a public company, Harrison believes that God owns it all. He sees himself as the "chief steward," accountable to God for using the resources he has been entrusted with to make a positive difference in the lives of over 6,000 employees and their communities.

Quoting Bible verses and encouraging his audience to have a relationship with Jesus Christ, Harrison mixed his faith with his business practices when he addressed the students and faculty of Mississippi College School of Business.

MIKE HUCKABEE
Former Arkansas Governor and 2008 Presidential Candidate

Former Arkansas Gov. Mike Huckabee, who ran a strong race for the White House in 2008 and hosts a popular weekend show on the Fox News Channel, spoke to Mississippi College students as part of the school's Executive Speaker Series.

The author of seven books, the most recent being the best-selling *A Simple Christmas*, the Republican finished second behind John McCain in his quest for the Republican presidential nomination three years ago.

Much in demand as a speaker at churches and other venues nationwide, Huckabee served as governor of Arkansas from 1996-2007. A significant part of his adult life was spent as a pastor and denominational leader. He became the youngest president ever of the Arkansas Baptist State Convention. As a Baptist pastor, he led rapidly growing congregations in Pine Bluff and Texarkana. Huckabee served as chairman of the National Governors Association as well as the Education Commission of the States.

Taking aim at President Barack Obama's handling of the crisis in Libya, raising serious concerns about rising federal debt and discussing his Christian faith, Mike Huckabee was an instant hit at Mississippi College.

Whether voters like him or not, Huckabee said he's more interested in the evaluation he receives from almighty God. As a believer, the Republican told hundreds of MC students at Self Hall, "I want to hear six words – well done, good and faithful servant."

Matthew Caston, 22, a senior from Jackson, said he was "really impressed" with the Republican from Arkansas. "He was really personable to the students [and] answered all the questions truthfully."

Huckabee encouraged the Mississippi College audience to get involved in the political process, vote and consider a run for office, whether it's a seat on the school board or a race for the White House.

TODD WOODS
Senior vice president, deputy general counsel, and assistant secretary
 Lowe's Companies, Inc.

Mississippi College was pleased to have Todd Woods, of Lowe's Companies, Inc., inspire business students attending the Executive Speaker Series with his life and career experiences. Woods currently serves as Senior Vice President, Deputy General Counsel, & Assistant Secretary of Lowe's.

Woods was born in Cleveland, Mississippi and is proud to be an 8th generation Mississippian. He graduated from Washington School in Greenville, MS and went on to earn dual Business Degrees from the University of Mississippi. Just one year later, Woods graduated from Ole Miss with a MBA.

Immediately after earning his MBA, Woods entered Mississippi College School of Law in August, 1991. Todd met his wife, Amy, while at MC and they were married just before entering their third year of law school.

Todd practiced law in Jackson from 1994-2002, most recently with Adams & Reese LLP.

Todd transitioned from private practice to corporate in-house practice when he joined Lowe's Companies, Inc. in July, 2002. Beginning with litigation management, Todd succeeded in increasing roles of responsibility and was promoted to Senior Vice President, Deputy General Counsel and Assistant Secretary in 2009. He is presently responsible for teams handling domestic and international crisis, Governmental Demands, Class Actions, IT and IP transactions and certain mergers and acquisitions.

1. Joel Bomgar greets MC Business students. • 2. Mike Huckabee • 3. An MC Business student takes notes during Mike Huckabee's presentation.
 4. Joel Bomgar • 5. Dr. Marcelo Eduardo and Todd Woods • 6. Frank Harrison and Dr. Marcelo Eduardo



The MISSISSIPPI HEALTHCARE REFORM SUMMIT

The second annual Mississippi Healthcare Reform Summit was held on Wednesday, October 26, 2011, in Anderson Hall on the campus of Mississippi College.

Mississippi Lieutenant Governor, Phil Bryant addresses the Healthcare Reform Summit attendees. Opposite page: Dr. Reed Tuckson, EVP and Chief of Medical Affairs at UnitedHealth and Mr. Andrew Webber, CEO of the National Business Coalition on Health



This half-day conference brought together national healthcare experts and key state leaders in government and business to address the most pressing topics businesses face in managing healthcare programs and costs. Summit participants had the opportunity to hear directly from our state's policy makers, medical leaders, and corporate professionals on the leading edge of the changes sweeping through our state's healthcare system. The symposium featured remarks, perspectives, and presentations from Lt. Governor Phil Bryant, Mississippi State Insurance Commissioner Mike Chaney, President and CEO of the National Business Coalition on Health Andrew

Webber, Vice President of New Albany Medical Group Dr. Jason Dees, Executive Vice President and Chief of Medical Affairs at UnitedHealth Group Dr. Reed V. Tuckson, and Dr. Thomas C. Fenter, Corporate Medical Advisor at Blue Cross & Blue Shield of Mississippi. The Summit ended with a panel discussion regarding the Best Practices in Healthcare and was moderated by Billy Sims, Vice-President of Human Resources at Southern Farm Bureau Life Insurance Company. As we navigate healthcare reform in the coming years, this forum will become an integral part of keeping Mississippi business and community leaders informed and equipped to best manage health and wellness programs.



With

HONOR

MISSISSIPPI COLLEGE SCHOOL OF BUSINESS

HONORS DAY LUNCHEON

AWARD WINNERS *and* INDUCTEES

SPECIAL AWARDS

CHELSEA GAINNEY is the recipient of the Amy Brand Memorial Award. This is a scholarship award given in memory of Amy Brand, an Assistant Professor of Marketing from 1979 to 1994, to an outstanding junior majoring in Business Administration or Marketing. Chelsea is a junior Marketing major from Forest, MS. She has a 3.8 grade point average, is a member of Mortar Board, and is currently interning with the MS State Department of Health.

LEKEITA MOORE is the recipient of the Outstanding Junior Accounting Student Award. This award is presented annually by Harper, Rains, Knight & Company, PA to an outstanding junior majoring in Accounting. LeKeita is from Jackson, MS and serves as the treasurer for the MC Accounting Society. She has a 3.87 grade point average and has worked as a tutor with Think Together Tutoring Group, as well as the Clinton Christian Community Corporation.

CHRISTINA MCCORKINDALE is receiving the G.M. Rogers Memorial Award given to the graduating Business Administration major who shows the greatest promise in the field. Christina has a 3.94 grade point average and was selected to Who's Who in American Colleges and Universities. She is a member of Mortar Board and Delta Mu Delta, and works as a tutor at Crestwood Inner City Mentoring.

JACLYN HOWARD of Clinton, MS is the winner of the Delta Mu Delta Scholarship Award, which is given annually to the graduating Business Administration major with the highest overall grade point average. Jaclyn has the highest GPA possible with a perfect 4.0. She received the Amy Brand Memorial Award last year for being an outstanding junior business major and received the Sandra Parks Academic Achievement Award this year.



1



2



3



4



5



6



With
HONOR

LAUREN WORKMAN is the recipient of the Outstanding Marketing Major Award, which is awarded to the most outstanding graduating Marketing major based on scholarship, leadership, and school participation. Lauren is a senior from Sledge, MS and has a 3.94 grade point average. She is a member of Alpha Chi, Delta Mu Delta, and the Dean's Student Advisory Board. She is also a recipient of the Sandra Parks Academic Achievement Award.

JUSTIN WALLEY is the recipient of the Mississippi Society of Certified Public Accountants Award, which is given to the senior Accounting major with the best general promise in the field of Accounting. Justin has a 3.93 GPA, is a member of Phi Theta Kappa, and is currently an intern at Eubank & Betts. He has been an active participant in the Mississippi College Wind Ensemble and will return to MC next year to pursue an MBA.

ZACH NORDAN is the recipient of the CFA Society of MS Award, which is given to the top Finance major in the School of Business. Zach received his Master's in Business Administration with a Finance Concentration in May 2011. He was Valedictorian of his class at the Ole Miss School of Banking, and is currently employed by Trustmark National Bank as Vice President/Commercial Loan Officer.

JULIE HALL is the recipient of the Wall Street Journal Award, which is given to the best all around senior in the School of Business based on scholarship, leadership, and school participation. Julie is a Business Administration major from Picayune, MS. She has combined a 4.0 GPA with a remarkable array of accomplishments and activities. She was selected last year as the Outstanding Junior Business Major and was elected to Who's Who in American Colleges and Universities. Julie serves in MC's Student Government Association as Campus Activities Board Chairman, was elected to Mortar Board, and also served as President of Delta Mu Delta. She most recently served as the editor for the *MC Business Magazine* and has interned as an investment analyst for Smith, Shellnut, and Wilson.

SANDRA PARKS OUTSTANDING ACADEMIC ACHIEVEMENT AWARDS

CHRISTINA ALVAREZ is an MBA student from Pearl. She works in the Customer Information and Fraud Department at BankPlus.

KIRK ANTHONY is a senior Accounting major from Byram. He was the recipient of the Outstanding Junior Accounting Award last year and is now working with Williams, Wise and Hester, CPA.

LUJIA CHEN is a senior Business Administration major from China. She is a Dean's list scholar and a leadership team member for the Clinton Chinese Student Fellowship.

ANDREW COMANS is a senior Business Administration major from Madison. He is a member of Civitan Men's Club and has interned with Smith Barney.

JULIE HALL is a senior Business Administration major from Picayune. She is a Hederman Scholar and a president's list scholar.

JASON HORNE is a MBA student from Madison. He owns Horne Architectural Products.

CALEB HOUSTON is a senior Business Administration major from Laurel. He has earned the rank of Eagle Scout and work as a Financial Planner for Phoenix Health Care.

JACLYN HOWARD is a senior Business Administration major from Jackson. She is a president's list scholar and a member of Alpha Chi.

JEFFREY KENNEDY is a senior Business Administration major from Mize. He is part of MC's Accelerated Degree Program and is a Service Manager for Payment Alliance International.

RANDA LEE is a senior Accounting major from Diamondhead. She is a member of MC Varsity Women's Basketball team.

1. MC Business Dean's Student Advisory Board • 2. Amanda Sturniolo is congratulated by Dr. Frank Hood on induction to Delta Mu Delta.
3. Mrs. Sandra Parks, Assistant Professor of Accounting • 4. Dr. Mark McComb, receives the Faculty of the Year award for the School of Business.
5. Invited guests enjoy the Honors Day Luncheon. • 6. Chelsea Gainey, is congratulated by Dr. Frank Hood on induction to Delta Mu Delta.

Matthew Ingram, an MBA student and Delta Mu Delta inductee is congratulated by Dr. Frank Hood, the Delta Mu Delta sponsor.



With HONOR

CHRISTINA MCCORKINDALE is a senior from Katy, Texas. She is the recipient of the Presidential Scholar with Distinction Scholarship and is a member of Mortar Board.

COURTNEY MCGRAW is a senior Marketing major from Natchez. She is a member of Delta Mu Delta and Phi Theta Kappa.

CLAYTON MOORE is a MBA student from Clinton and an Accountant with Mosley & Company.

ALICIA PARKER is a senior Business Administration major from Brandon. She is part of MC's Accelerated Degree Program and works with Community Bank of Mississippi.

BRENDA PARKER is a senior Accounting major from Flora. She is the Office Manager for Air Supply in Jackson.

JOHN ROSENBLATT is a senior Business Administration major from Madison. He serves on the Dean's Student Advisory Board and is a member of Delta Mu Delta.

SONIA STENZEL is a senior Business Administration major from Brandon. She is part of MC's Accelerated Degree Program and is a member of Delta Mu Delta.

TAMMY STERLING is a senior Accounting major from Clinton. She is a president's list scholar and a member of Alpha Chi.

JUSTIN WALLEY is a senior Accounting major from Byram. He is a member of Phi Theta kappa and interns with Eubank and Betts.

LAUREN WORKMAN is a senior Marketing major from Sledge. She is a member of Alpha Chi, Delta Mu Delta and the Dean's Student Advisory Board.

DELTA MU DELTA INDUCTEES

GUS BRAND is a junior Accounting major from Aberdeen. He currently serves as the Vice-President of Civitan Men's Club.

ALBERT BUTLER is a senior Business Administration major in our Accelerated Degree Program from Terry. He is also a president's list scholar.

ANDREW COMANS is a senior Business Administration major from Madison. He is a member of Alpha Chi and serves on the MC Senate.

JOHN DAUGHTRY is a junior Business Administration major in the Accelerated Degree Program from Brandon, and he owns his own business.

CHELSEA GAINEY is a junior Marketing major from Forest. She is also a president's list scholar and is the recipient of the Amy Brand Memorial Award.

HANNA HURT is a junior Accounting major from Columbus. She serves as treasurer of Swannanoa social tribe.

MATTHEW INGRAM is a MBA student from Clinton. He is a property manager with Parkway Properties.

STEVEN MCDEVITT is a MBA student from Madison. He is an accountant with the MS Department of Transportation.

CHELSEY NEAL is a junior Accounting major from Foxworth. She is Vice President of Public Relations for the Accounting Society.

GREGORY NORRIS is a senior Business Administration major from Clinton. He is a Project Manager at Grand Gulf Nuclear Station.

JONAS OUTLAW is a MBA student from Jackson. He is a personal computer analyst for Southern Farm Bureau.

BRIANA RICKER is a junior Accounting major from Clinton. She is a president's list scholar and a member of Alpha Chi.

JOHN ROSENBLATT is a senior Business Administration major from Madison. He serves on the Dean's Student Advisory Board.

COURTNEY RUSHING is a senior Marketing major from Natchez. She is a member of Delta Mu Delta and Phi Theta Kappa.

AMANDA STURNIOLO is a junior Business Administration major from Greenwood. She will serve as the Vice President of the Student Government Association for the 2011-2012 school year.

KATIE STUTZMAN is a Marketing major from Vestavia Hills, AL and is a member of Alpha Chi.

CALVIN THIGPEN is a junior Accounting major from Madison. He is a Vice President with Trustmark National Bank.

KIMBERLY STERLING is a junior Business Administration major from Cordova, TN and is a president's list scholar.



MC BUSINESS

EXECUTIVE EXCELLENCE

Bobby Chain Receives the 2011 Executive Excellence Award

TO LIST THE PRIORITIES IN BOBBY CHAIN'S LIFE, they would be his family, business, and education. With his family at the top of this list, he has made a profound impact in both business and education at the local, state and, national levels.

Business began for Bobby Chain at the ripe old age of 13, selling newspapers to the troops at Camp Shelby south of Hattiesburg. Today the phenomenal growth and rich history of Chain Electric Company brought the firm to be named as the number two company among the top forty fastest growing private companies in Mississippi.

His love for his hometown of Hattiesburg led him to run for Mayor in 1981, to fill one year of the unexpired term of The Honorable Bud Gerrard. He said that he wanted to make a positive difference in his hometown, which would be felt by generations to come. In 1982 he was elected to a full-term.



B

obby Chain's drive, determination and the willingness to serve has resulted in appointments to working boards and commissions in a wide variety of disciplines in business, industry, government, and education. These recognitions include the likes of the appointment by President Lyndon Johnson to the National Advisory Council for Small Business Administration, and appointment by President Ronald Reagan to the National Advisory Council on Adult Education in 1984. Appointments also include the Mississippi Business Hall of Fame and the

prestigious Albert Gallatin Award for Arkansas, Louisiana, Mississippi, and Tennessee, an award made to independent businessmen for outstanding business success and service.

He retired in December as a member of Board of Directors of the Federal Home Loan Bank of the United States, assigned to Dallas, TX, after serving an eight-year term. The completion of this term gave him 45 years of service as a bank board member.

Perhaps, Bobby's greatest impact on education was his appointment to the Board of Trustees of the Institutions of Higher Learning for the State of Mississippi. He was appointed to a twelve-year term, 1972-1984, and served as President of the Board from 1978-80.

BOBBY CHAIN'S DRIVE, DETERMINATION AND THE WILLINGNESS TO SERVE

has resulted in appointments to working boards and commissions in a wide variety of disciplines in business, industry, government, and education. These recognitions include

the likes of the appointment by PRESIDENT LYNDON JOHNSON to the National Advisory Council for Small Business Administration, and appointment by PRESIDENT RONALD REAGAN to the National Advisory Council on Adult Education in 1984.



IN A RECENT BOOK, *The Life and Journals of a Mississippi Entrepreneur*, MISSISSIPPI GOVERNOR HALEY BARBOUR SAID:

“Bobby Chain is a shining example of the things that make Mississippi such a special place. I am very appreciative of his lifetime of efforts and proud to honor him with the inaugural award of the Mississippi Medal of Service.”

During his time on the College Board, and with Mississippi facing a shortage of doctors, he led a successful effort to have Doctors of Osteopathy educated and licensed to practice in Mississippi. Today a College of Osteopathic Medicine is educating its first class in Mississippi.

The technology building at the University of Southern Mississippi bears the name “Bobby L. Chain Technology Center,” recognizing his further contribution to education, particularly higher education.

Mr. Chain recalls, “My years at Demonstration School were from 1940-1947. This school was part of the School of Education at Mississippi Southern College, and was a 12 grade school. The classes were limited to 24, and each class had a critic teacher (college professor) and two senior education majors from the College who would observe the critic teacher for six weeks, then take turns teaching for a full semester while being observed by the critic teacher. My parents applied for acceptance for my sister and me. After the 7th grade we were required to attend every concert or speech on the College Campus. Once a month we were invited to a teacher's house for a formal dinner where we wore a coat and tie. We were served out of china, crystal, and silver. Manners were the objective. After the 8th grade we were required to take ballroom dancing for one hour per day.”

After graduating from Demonstration, Mr. Chain enrolled

at Mississippi College to play football, where in his words, “my grades suffered.” While at MC he lived in Chrestman hall with three ministerial students, who were all World War II veterans. One of them was Mr. Pete Evans, who became a lifelong friend. According to Mr. Chain, “Pete married my wife and me 44 years ago. Pete's wholesome influence had a great impact on my life.” Mr. Evans died 10 years ago after serving fifty-plus years in the ministry. Mr. Chain has generously funded a scholarship at MC in his dear friend's memory.

After attending MC, he received the B.S. in Building Construction Technology from The University of Southern Mississippi. He has been awarded the Honorary Doctorate in Business Administration by William Carey University.

Chain is married to the former Betty Green of Hattiesburg. The couple has four children Robin, Laura, Bob, and John. They enjoy eleven grandchildren, and two great-grandchildren. They are active members of First Presbyterian Church, in Hattiesburg.

In a recent book *The Life and Journals of a Mississippi Entrepreneur*, Mississippi Governor Haley Barbour said: “Bobby Chain is a shining example of the things that make Mississippi such a special place. I am very appreciative of his lifetime of efforts and proud to honor him with the inaugural award of the Mississippi Medal of Service.”

MC BUSINESS

DISTINGUISHED SERVICE

Harry Vickery Receives the 2011 Distinguished Service Award



EVERY DAY THOSE OF US THAT WORK IN THE SCHOOL OF BUSINESS are humbled by the dedication and the commitment of so many people as they help us to both preserve and build on the amazing tradition that we have forged at Mississippi College for more than 170 years. Since the School of Business was established 65 years ago, an active and involved alumni base has been critical to the business school's continual growth and success. The vibrant business school that you all see today is only made possible by the generosity of alumni and friends who dedicate time, talents and financial support to advancing the mission of MC Business.

Mr. Harry Vickery is emblematic of such service and it was with great pride that Dr. Eduardo presented him with the School of Business Distinguished Service Award. Mr. Vickery and his wife, Ann, attended the 2011 School of Business Honors Day Luncheon together where the award was presented to him. Katrina Pace,

Director of Development for the MC School of Business, says of Mr. Vickery, "He is a long-standing friend of Mississippi College, and I have been blessed to get to know him better as we've worked together on advancement projects for the School of Business." Dr. Eduardo stated at the event in presenting Mr. Vickery with the award, "Mr. Vickery, the School of Business at Mississippi College has been honored by your friendship and support."

Mr. Vickery is a 1957 graduate of Mississippi College where he earned a degree in business. He has had a remarkable business career both in the automobile and insurance industries, and in 1988 he was named Mississippi College Alumnus of the Year. He also served as a trustee for Mississippi College for over 25 years. His decades-long commitment to serving MC has made a significant, positive and long-lasting impact on the college and on all of us in the MC Business family.

"Mr. Vickery, the School of Business at Mississippi College has been honored by your friendship and support." — Dr. Marcelo Eduardo





— MC BUSINESS —

ALUMNUS OF THE YEAR

Don Jordan Receives the 2011 Alumnus of the Year Award

A 1951 GRADUATE OF MISSISSIPPI COLLEGE, DON JORDAN IS the 2011 Alumnus of the Year for the School of Business. The MC School of Business is very proud to have Mr. Jordan as a graduate. Growing up in Kosciusko, Mississippi, Jordan always had a head for business, whether it was operating a fruit stand or even selling his leftover Easter candy to his classmates.

Jordan enrolled at Mississippi College in the late 1940s, where he demonstrated his ability to spot business opportunities. He and his roommate, Robert McRae, started a used textbook program at MC that eventually became an example followed by other universities. They also bought basic sandwich items from local convenience stores when an ice storm shut down the campus cafeteria and operated a sandwich shop in their dorm room. This same storm froze MC's water system, and Jordan and McRae rented a hotel room nearby, charging fellow students to take a shower. However, Don admits to eventually feeling guilty and letting everyone shower for free.

He was completely shocked when he was accepted into Harvard Business School, especially since he had never actually applied. Without telling him, his teacher, Ms. Frances Skulley, to whom he is still grateful to this day, had sent in the application for him. Jordan accepted the scholarship and he became the first MC graduate to attend Harvard Business School. After graduating from Harvard and service time in the U.S. Army, he held a number of high-profile positions with Proctor & Gam-

ble, First Mississippi Corporation, Bristol Myers, and Plough. He and his family eventually decided to settle down in Memphis, Tennessee where he became very active in his church and community.

Mr. Jordan did very well in balancing his professional life with his personal and church lives. In 1974, he bought a Wendy's franchise in Waco, Texas, where he became very active in the community. This Wendy's franchise became one the best performing Wendy's in America and won basically every marketing award given by Wendy's International.

In the early 1990s, Jordan's son Trey approached him about starting up a business together. They eventually opened up their own restaurant, naming it Holiday Deli & Ham. This family-oriented business serves sandwiches, soups, salads, and desserts, many of them coming from Jordan's own recipes. They sold more than 80,000 pounds of their signature pimento cheese alone last year. Jordan wanted to create an atmosphere in which the employees and customers all felt like they were part of a family. This strategy proved to be most successful, and they now own and operate six locations in Memphis and Knoxville, where they operate as Pimento's Café.

After over 20 years of driving from Tennessee to Texas, Jordan decided to sell his Wendy's franchise in Waco. In 2004, he retired and named his son sole owner of Holiday Deli & Ham. He still remains active in the restaurant by serving as an advisor.

MR. JORDAN BECAME THE FIRST MC GRADUATE TO ATTEND HARVARD BUSINESS SCHOOL.

After graduating from Harvard and service time in the U.S. Army, he held a number of high-profile positions with Proctor & Gamble, First Mississippi Corporation, Bristol Myers, and Plough.



PREPARATION FOR SUCCESS

Business Helped Pave the Way for Eddie Carlisle's Successful Career in Finance

A 1994 graduate of the School of Business, Eddie Carlisle has taken the basics learned at MC and garnered a successful career in Finance. After graduating from MC with special distinction, Eddie enrolled in Vanderbilt University School of Law. When asked how MC prepared him for law school, Eddie responded, “For me, one of the hardest parts of law school was getting the case reading assignments done before class. Time management became crucial. That’s where my MC experience really helped. The high academic standards at MC, combined with its numerous opportunities for campus involvement, allow (or maybe require) its students to develop good study skills and time management skills.”

After graduating from Vanderbilt, Eddie began his law career with Daniel, Coker, Horton & Bell, P.A., where he worked for three years before going to the University of Florida for his Master of Laws. Moving back to Jackson, Eddie practiced for five years with Watkins & Eager, PLLC. Moving back to his roots in Business and Finance Eddie currently is a client advisor for Medley & Brown, LLC, a fee-only investment advisor that offers asset management services to individuals, families, small businesses, foundations, and retirement plans.

When asked how well the MC School of Business prepared him for graduate school and life in general, Eddie responded,

“Life in general still requires me to rely on the study skills and time management skills that MC helped me develop. And the School of Business’s curriculum is thorough and rigorous. Many of the topics covered in classes I thought, at the time, I’d never need, but now am I ever so grateful we were taught them! Whether it’s something from accounting, finance, economics, or even marketing, I’m often surprised at how various current projects require me to think back to a lesson covered in one of my college classes.”

As an undergraduate at MC, Eddie enjoyed being active in Civitan Men’s Club, the MC Senate, Accounting Society and Delta Sigma Pi. One of Eddie’s favorite professors, Mrs. Sandra Parks, was instrumental in Eddie attending MC through her accounting class on Preview Day. When asked what advice he would give a prospective student Eddie said, “MC has so much to offer. Its students have the benefit of an environment full of opportunities—to obtain top-notch classroom instruction, to meet life-long friends, and to be active in campus organizations. The professors have open doors and welcome questions. The school is also an integral part of its community, which adds another level of opportunities for students.”

Eddie is married to the former Sarah Crisler, a 1997 MC graduate, and they have two children: Andrew, age four and Caroline, age two. Sarah is a practicing dentist in Madison.

“WHETHER IT’S SOMETHING FROM ACCOUNTING, FINANCE, ECONOMICS, or even marketing, I’m often surprised at how various current projects require me to think back to a lesson covered in one of my college classes.”

SPOTLIGHT *on the* ACCELERATED DEGREE PROGRAM

MISSISSIPPI COLLEGE first introduced the Accelerated Degree Program (ADP) less than ten years ago, and its growth has truly shown what a spectacular program it is. The program was designed to provide all the quality and depth of knowledge of a traditional degree in an accelerated evening schedule in order to accommodate working individuals who seek to further their education.

AFTER A YEAR AND A HALF of attending Mississippi State University, Elizabeth “Lizzy” Lynch, who is now the Director of Marketing and Public Relations for the Jackson Heart Clinic and the Executive Director of the Jackson Heart Foundation (the philanthropic leg of the clinic), found herself facing a tough decision.



While trying to plan her dream wedding, she felt like she would have to choose between a full-time job and continuing her education. She hated the thought of putting school “on hold” and was thrilled when she heard about MC’s ADP program over the radio. The program had a number of attributes that appealed to Lizzy and her predicament. At that time, Lizzy was employed as the marketing coordinator for local State Farm Agent, Malcolm Houston, so she needed a program that would accommodate her work schedule and also allow her to be home a few nights out of the week. She was pleased to hear that each course would only be 8 weeks long, instead of the traditional 16 weeks, meaning she could complete the same amount of work in half the time.

After that, Lizzy did some research to see if other schools in the area had similar programs. Although she did find some similar programs, she felt that MC had the most to offer. As a hard working and self-motivated student, she was discouraged by the thought of having to complete half of her coursework in a group setting with no professor present, which is what many other programs offer. Unlike with these other programs, students in the ADP program get to meet with their professors in a classroom setting two nights out of every week.

After deciding MC’s ADP program was her best option, she attended an information session where she was welcomed by the Dean, Dr. Eduardo. At the end of the session, she knew MC was where she wanted to be.

From her experience at MC, Lizzy believes the keys to success in the ADP program are motivation, time management, and organization. Lizzy, who has always had efficient time management and organizational skills, recognizes that the program helps students further develop their existing skills, while also learning new skills. Lizzy often took up to 15 hours a semester while working full time and still had time to attend various MC functions, such as football games, and also spend time with her family and friends. The ADP program helped Lizzy become more efficient at work and home, and she continues to use those skills today as she juggles MC’s MBA program and her current job at the Jackson Heart Foundation.

The most memorable aspect of the ADP program for Lizzy was her professors. “They did a wonderful job at relating each subject matter to real life situations [and] helping each student think outside the box.” She loves being able to use the marketing knowledge and terminology she learned at MC and feels they make her more credible and confident in her abilities. Three of her most memorable professors are Dr. Bill Baker, Dr. Price York, and Dr. Bryan Hayes.

Dr. Baker, who taught Lizzy Old Testament, is a passionate professor who teaches the complex topics of the Bible in such a way that students can truly understand them. Because of this, Lizzy has become more confident in her ability to discuss different subjects from the Bible with others, including her beloved grandmother. Dr. York, who taught Lizzy numerous Marketing courses, did a great job of keeping her attention with his real life stories that help students relate to the topics of discussion. He also taught her a valuable lesson by asking her, “How will you ever learn to your fullest potential without making a mistake every now and then?” She has learned that it is okay to make mistakes, and that you should not beat yourself up over them, but use them to make yourself a better person.

Dr. Hayes taught Lizzy Marketing Research in her last semester at MC and also got the chance to get to know her and her parents on MC’s Spring Break trip to Greece in 2009. Because his class was the only class in which Lizzy received a “B,” Dr. Hayes also helped her learn a valuable lesson – Although she strives to make an “A” in every class, what truly counts is that she learned something from the class that will make her more successful, with or without an “A.”

Each professor helped Lizzy feel welcome and like she was truly important, not just another student. She feels that “Once you become an MC student, you are truly a part of the Choctaw family. You will meet some of your best friends at MC and are given multiple opportunities to take trips and attend other fun events.” Lizzy really enjoyed her time at MC and was such a wonderful student that she was offered a position at the Flowood Center the semester after she graduated with her Bachelor of Science degree in Business Administration

“ONCE YOU BECOME AN MC STUDENT, you are truly a part of the Choctaw family. You will meet some of your best friends at MC and are given multiple opportunities to take trips and attend other fun events.”

with a concentration in Marketing.

Lizzy got the opportunity to help introduce the Flowood Center as an extension of MC’s ADP program on August 16, 2010. She gained valuable experience working under Dr. Sara Kimmel, who “was a true gift from God,” and taught her that “no idea is too small or too big and [to] never hesitate to suggest ideas to others.” Lizzy’s position in the ADP program allowed her to build relationships with other businessmen and women throughout the community and stay “in the know” on upcoming events and breaking news throughout the area, which is vital to one’s success in the field of marketing. She also became very active with the Flowood Chamber, where she was a diplomat and the treasurer for the Flowood Referral Exchange Group.

Without MC’s ADP program, Lizzy wouldn’t have been able to receive her degree while working full time and planning her wedding. She has learned valuable lessons and made many friends that she’ll never forget. She plans to graduate from MC with her MBA in the next year and a half, and continue working in the field of marketing.

MC BUSINESS

JOIN MC BUSINESS

Please consider giving to the AACSB SUPPORT FUND
at the MC School of Business in your year-end giving plans.

Please join us. This fall the MC Business family will take a significant step toward advancing the School of Business at MC by pursuing accreditation by the AACSB – the Association to Advance Collegiate Schools of Business.

The School of Business is currently accredited by the ACBSP—the Accreditation Council for Business Schools & Programs. The new AACSB accreditation will be the highest seal of approval bestowed on collegiate Schools of Business and by earning this AACSB seal of approval MC will join the ranks of the most elite business schools in the country.

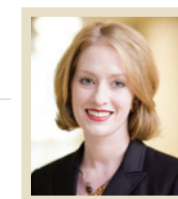
Historically, AACSB accreditation was reserved for business schools focused heavily on research and academic publications. However, the accreditation now allows teaching institutions, such as the MC School of Business, to be accredited without sacrificing the long-time focus MC has had on teaching and our students' classroom experience. For decades, the MC School of Business has been known for our faculty's devotion to educating students and commitment to teaching. Our faculty also has a track-record

of remaining academically engaged in their disciplines. This focus will continue to be a priority, and will be the cornerstone of our success in achieving this exceptional accreditation.

The process of pursuing AACSB accreditation will take 5 to 6 years and during this time, we need your support. Maintaining our world-class facilities, keeping our teaching technology current and supporting our faculty as they work to remain leaders in their fields are critically important during this accreditation period.

Hundreds of you have made gifts to the School of Business in recent years and we ask you to consider doing so again in 2011. All of us in the MC Business family—students, faculty, alumni and friends—will be positively impacted by achieving this important goal for the School of Business.

Please consider giving to the AACSB Support Fund at the MC School of Business in your year-end giving plans. You may give online to the School of Business at www.mc.edu or use the envelope enclosed in this publication to return your gift to the school.



FOR MORE INFORMATION, PLEASE CONTACT KATRINA PACE, DIRECTOR OF DEVELOPMENT
FOR THE MC SCHOOL OF BUSINESS AT 601.925.3421 OR [KPACE@MC.EDU](mailto:kpace@mc.edu).

LIKE US ON FACEBOOK. *Join us by searching for Mississippi College School of Business on Facebook.*



**CONTINUED
EXCELLENCE**

**CONTINUED
EXCELLENCE
CAMPAIGN
SUPPORTERS
2002 TO 2011**

**DEAN'S CIRCLE
\$100,000 AND
HIGHER**

Samuel D. Anderson
Mr. and Mrs. John
F. Brock III
James and Donna
Barksdale
Randall Crenshaw
Robert M. Hearin
Foundation
Henry Hederman
Zach T. Hederman
J.L. Holloway
L. D. Jordan
Lois T. Kennedy
Gary Parker
Joe Robison
Ed and Jan Trehern
Alien Williams

**EXECUTIVES
\$10,000 TO \$99,999**

ADCAMP
Dorsey Barefield
Charitable Trust
Bank of Brookhaven
Century Construction
and Realty, Inc.
Bobby L. Chain
Don Check
Citigroup Foundation
Coca-Cola Foundation
James Anthony Coggin
Margaret and Wallace
Burnell Collins
Hayden S. Dent
Mike and Melanie
Dowell
Ergon, Inc.
Fox-Everett
Insurance, Inc.
Dan Grafton
KPMG Peat Marwick
Haddox, Reid, Burkes
and Calhoun
Fred Hahn
Cecil Harper
Harper, Rains, Knight
and Company, PA
Thomas Eugene Hawk

Robert E. Holland
Horne LLP
Howard Industries, Inc.
Tony Huffman
Huffman and
Company, CPA
Eddie Kinchen
C. Neil King
Jackie Majors
Colin Maloney
Robert Lee McRae
Merchants and Farmers
Bank
Merrill Lynch
Mississippi
Manufacturer's
Association
Morningside Foundation
Gary and Sharon Parker
Lloyd E. Roberts
The Schwab Fund for
Charitable Giving
Mike Britt
Self Foundation
State Farm Companies
Foundation
State Farm Mutual
Automobile Insurance
Company
Wayne Arthur Stevens
Joseph Baker Stradinger
Leigh Van Hoose
Vertex Aerospace, LLC
Ben N. Walker
Lance Wedgeworth
Aven Whittington
The Terrell E. Wise
and Eloise D. Wise
Foundation

**DIRECTORS
\$5,000 TO \$9,999**

BKD
Mary and William
Gerald Baughn
Blossman Propane
C. Mark Bullock
Carter Burnsides
Tommy Butler
Coca-Cola Bottling
Eastgroup/Parkway
Foundation
Marcelo Eduardo
Eubank and Betts, PLLC
William Grogan
Ray Eugene Hannah
Steve Longo
Prudential Foundation

Regions Bank
River Oaks Health
Systems
Southern Farm Bureau
Staplecotn
Tony P. Stringer
Trustmark National Bank
Edward Wettach
Eleanor Hederman Wettach

INVESTORS

\$1,000 TO \$4,999
AIM Technologies
Tammy Yates Arthur
Bain Manufacturing
BancorpSouth
Ralph Barnes
BellSouth
Blue Cross and Blue
Shield of Mississippi
Bob Boyte Honda
Samuel Mansell Brand
Mike Britt
Donna Bruce
Bryson and Company
Central Mississippi
Medical Center
Ann Tyson Campbell
Donald Causey
Brandon Louis Comer
Community Bank
Michael E. Crandall
William A. Cranford
Marty Davidson
Dickerson and Bowen
Earth Consulting
Group Inc.
Lance M. Davis
Ted B. Edwards
Walter L. Enete
Entergy
Arthur Finkelberg
J. Kyle Fulcher
Grantham Poole
Brian Hall
Daniel Hall
Damon Kyle Hawk
Glenn Morris Hengst
Olivia Host
Thomas Howard
Darrell L. Jones
L. D. Jordan
Susie Claire Jordan
Gary Fern N. Keen
Gary Wilson Keller
Tim Lawrence
Gerald Lee

Mad Genius, Inc.
Maloney Glass and Door
Charlotte Markow
Mascagni & Company
J. Randall Mascagni
John C. McCormick
Ed McDonald Real Estate
Ben McKibbens
Merrill Lynch and Co.
Foundation, Inc.
Lee Douglas Miller
Mississippi Baptist
Medical Center
*Mississippi Business
Journal*
Mississippi State
Medical Association
Cheryl M. Mobley
Mike Morgan
Joe C. Morris
Patricia H. Mounce
Debbie Norris
Richard Nowell
Mark Pace
Sandra Brocato Parks
Kevin Pauli
Gail Pittman
Davis A. Richards
John H. Rose
Edward Rowell
Sanderson Farms
John Rance Sapen
J. Robert Shearer
David Smith
Ryan Anthony Smith
David Stevens
Stewart Sneed Hewes
Al Stubblefield
Kenneth P. Toler
Harry Upton
Harry E. Vickery
James Westbrooks
Charles R. Wilbanks
William Carey University
Lisa Stewart Williamson
Mark R. Wilson
W. M. Yates

**SHAREHOLDERS
UP TO \$999**

Tim Adler
Robyn Douglas Aker
Lee Ann D. Allison
Nancy Ellen Anderson
Paula Annette
Graves Ardelean
Avaya
Ross Leon Aven

Janice Marie Gough
Baddley
David Andrew Bailey
Clyde Pinson Ballard
Barksdale Bonding
& Insurance
Charles E. Barranco
Rayburn H. Bates
Joyce Ann Beacham
Eddie Paul Beck
Craig Anthony Begert
Tom Billingsley
Thomas Edward Blalock
Joseph B. Blanset
Thomas Bobo
Terry James Boffone
Nedra Boggs
James Christopher Boone
William Julius Bosarge
Natalie A. Box
Kelly Rodney Breland
Mary Jean Breneman
Barbara Marie Brinson
Adriane Michelle Brown
Barbara Lowery Brown
Paula Barkley Brown
Josephine Bryan
Henry H. Burge
Dick Burney
Sallie LaRue Burt
Clement Lucas Burwell
Hayes Callicutt
April Lashun Campbell
Virginia Campbell
Peggy B. Cannada
Stephen Anthony Cappello
Michael G. Carkhuff
Edward Lane Carlisle
Katherine Patten Carpenter
Sheena Louise Carr
Kristin W. Carraway
Michael Carraway
Jewel McNair Carter
Elizabeth C. Carter
Herbert L. Carver
J. R. Chapman
Linda W. Chapman
Christopher Alan Clark
Marjorie S. Clark
Cynthia Len Clements
William E. Coates
Elnora Comer
Cooper Industries
Foundation
Wesley Madison Conn
Thomas W. Cooper
Dorothy D. Copeland

Clyde X. Copeland
Charles Samuel Corder
Sheree McGuffee Corkern
James Oliver Cox
Tina Rester Craft
York Craig
Linda M. Crane
Robbie S. Cross
Constance C. Crosswell
Robert M. Cudd
Richard Noland Cummins
Kay Daniel
Marc Daniels
Diane Theresa Davaul
Terry G. Davis
Lois T. Davis
Barbara A. Day
James Eugene De Medicis
David George Douglas
Albert Ray Duncan
Derek Clifton Easley
George Ewing
Ann M. Donahoe Farren
Charles W. Farrior
Frances H. Fioretti
B. Talmage Floyd
Justin Lynn Fuller
Sue Elyn Fuller
Kelly Lynn Gambino
Glenda Faye Gaskin
General Electric Company
Ralph R. Germany
David Michael Gibbs
Wayne Gober
Henry Davis Golden
Jane M. Goodson
Clark Edward Grantham
Lynette Gray
Robin LaVerne Green
Donna L. Grewe
Debra S. Grubbs
Gulf Power Foundation,
Inc.
Jackie H. Gunn
Jack W. Gunn
Joel E. Haire
James Cleveland Hall
E. Dwight Hammack
Cathy Hancock
Mark Allen Hardin
Pamela Goodson Hardy
Carolyn C. Hargis
Mary G. Harkness
Mark Dewayne Harris
Martha Jo S. Hayes
James D. Hayes
James Bryan Hayes

Bernice F. Hederman
Stephanie Leigh Neal
Higginbotham
J. Herman Hines
Winton Dewane Hisaw
Vickie Carolyn Ingram
Hodges
Rebekah Kathryn
Waterbury Hoggatt
Claude Allen Holland
Derek Glen Holmes
Deborah Smith
Horstmann
Suzanne C. Horton
John Michael Howard
Jeffrey A. Huff
Tammy Fitzpatrick Huff
Robert Blake Hughey
Harriet H. Humphreys
Carson Christopher
Humphries
Sue Whittington Hunt
Frank Hurst
Buzzy Hussey
IBM International
Foundation
Michael J. Ingram
Jonathan Neil Ishee
Kerry Camille
Perkins Ivy
Lacey Wolfe Ivy
Trudy Hall James
Fred E. Johnson
Peder R. Johnson
J. Fred Johnson
Orville W. Johnson
Otho S. Johnson
Joe D. Jones
Mary Nelle Berry Jones
Joyce M. Jordan
William J. Keesling
Horace Lee Kerr
Jeffery A. Keyes
Felix M. Killar
Sara Beth Kimmel
Susan Lorraine
Rogers Kinton
Richard Maurice Ladner
Robert S. Landrum
Jeanese Byrd Landrum
Katherine N. Langston
James Eric Lee
Gerald D. Lee
Kaye Jordan Lewis
Harvey Lewis
Almon Del Ray Lewis
Corinne Ryder Livesay

Ted Long
Paul Love
Bob Lowe
Louis Griffin Luby
Magnolia Printing
& Signs
Robert E. Manning
Raymond S. Martin
Richard Sidney Martin
Harold Aron Matrick
Billy John McAlpin
W.B. McCarty
James Carroll McCulloch
James A. McDill
Gerald Finleigh
McKenzie
Peggy J. McLean
John E. McPherson
Richard McRae
Brenda Brock Meyer
Tobi C. Sisson Miller
Danny Lester Miller
Audrey Jane Millette
Carl T. Millice
William Warner
Mitchell
Elizabeth L. Moak
John C. Montgomery
Edmund W.
Montgomery
Deena Stanley Moore
Mark Ira Morgan
William S. Morgan
Mori Luggage &
Gifts, Inc.
Fred Morris
Van M. Morris
Melanie Ann Morrow
Eugene Richard Morse
Michael Carl Murphy
Michael L. Murray
Jean H. Nall
Martha B. Nation
James Cecil Nations
Rebecca Ann Neal
Thomas Alfred Nelson
Nola Kate B. Nelson
Nancy B. Nesbit
New Perspectives, Inc.
Patricia T. Newton
Fred Leland Nichols
Wayne Elmer Nix
J. Christopher Nungesser
Tarris P. Oliphant
Oliphant Insurance
Agency, P. C.
Katrina Taylor Pace

Bobby J. Pace
Elizabeth B. Pantazis
Vicki W. Parks
Jana Burge Parrish
Linda Ann Patterson
Clyde Patterson
Kevin Pauli
Stanley W. Peckham
Gayle H. Pennock
Pfizer Foundation
David L. Pittman
Laci E. Gregersen
Pittman
Phi Theta Kappa,
International Honors
Society
William H. Polk
Van Brooks Poole
Kathy G. Porter
Ann Pritchard
Ennis Hall Proctor
Jann Weaver Puckett
Randy Lee Purkey
Fred H. Purser
Charles Palmer
Quarterman
Kelvin B. Raybon
Clifford Ray Redding
Patricia M. Redford
Carolyn N. Reese
Jerry A. Reese
Krista Celeste Rhemann
Jeffrey Richardson
Veronica M. Richardson
C. Robert Ridgway
Juanita Wallace Ridgway
Angela Mequel Rigby
Patrick James Robbins
Hilda Rae S. Roberts
E. Jack Robertson
Eleanor J. Rommerdale
William Edward Rorie
Ralph G. Ross
Rhoda Russell Royce
Ralph Ross
Charles R. Russell
Michael R. Rucker
Russell
Patricia Alison Rutledge
Rynnie D. Sanders
Billy Wyatt Sanford
Elaine S. Saxton
Vicki P. Scheider
Becky Scott
Edward W. Shackelford
Regenia Faye Shearrill
Susan M. Shelton

William Dale Shepherd
Ronald Wood Sigman
Nancy Marie Simboli
George Smith
Stephan Alan Smith
Charles G. Smith
William P. Smith
Herbert L. Smith
Scott Smith
Nancy Bowie Smylie
Southeastern Bus
Company, LLP
Suzanne G. Starr
Daniel Stubbs
Beverly Diane Swalm
D. A. Swayze
Jennifer Franklin Sylvester
Allison Anne Alford Talley
Andy Talley
Kirk G. Taylor
Jimmy Wayne Taylor
Jerry A. Thomas
Dion Thornton
Jamie W. Tice
Russell Kenneth Tillman
Sandra Kay Tillson
Christopher Lashon Toaster
Gaye S. Townsend
William R. Townsend
Jay A. Travis
Austin Kelly Tubby
Jonathan Scott Tucker
Jon C. Turner
Linda Benefield Valentine
Charles E. Vianey
Elliott Colby Vines
Suzanne Stovall Vinson
Harry M. Walker
Hilton Wallace
Timothy Leroy Wallace
Alan Lane Wallace
Bae B. Waller
Delores R. Walski
Todd Watson
Sheldon Magruder Webb
Walter Bruce Wellington
Becky McMillan Wells
Mary Ann Franks West
Joyce M. White
Susan Lane Wilbanks
Jerry E. Williams
Robert L. Williamson
Mary Allan S. Willis
Thomas Lance Wilson
Margaret D. Winstead
Gary D. Wood
Rebel Trent Wright
Lula B. Young
Treena F. Maddox Young



**CONTINUED
EXCELLENCE**



CORPORATE PARTNER SPOTLIGHT

Community Bancshares of Mississippi, Inc.

WITH MORE THAN \$2.3 BILLION IN ASSETS, 38 OFFICES AND OVER 650 employees in four states, Community Bank is one of the South's fastest-growing financial institutions. While the corporate banking industry has branched out into many areas of business, Community Bank's focus on simple deposit and loan services has been a cornerstone of their success. Many of you reading this article may recognize Community Bank as the bank that scrolls scripture verses on their message boards. This practice began years ago in small-town Mississippi, and with Community Bank's entrance into the metro Jackson market in the 1990s, the practice was introduced in Jackson with a welcome reception. Core value #1 on the bank's Corporate Code of Conduct is, "to honor God in all that we do." More than scripture on a sign, the bank's people and practices reflect this focus on values.

With many MC School of Business alumni in leadership positions at Community Bank, the MC School of Business is proud to call the bank a Corporate Partner. As Vice Chairman and Chief Financial Officer, MC alum-



TIM GRAY'S SUCCESS IS AN EXAMPLE FOR CURRENT ACCOUNTING STUDENTS, NOT ONLY DUE TO HIS PROFESSIONAL SUCCESS, BUT ALSO BECAUSE OF HIS LEADERSHIP IN THE COMMUNITY.

nus Tim Gray is playing a significant role in leading the bank's growth. Starting his career as a CPA in public accounting, Tim's career turned to banking in 1995, when he left Arthur Anderson in Memphis to work at Community Bank in Forest at the request of then CFO Bill Lehr and CEO Freddie Bagley. Having grown up in Forest, Community Bank was an immediate fit for Tim and his responsibilities have increased as the bank has grown. He now oversees accounting and finance, budgeting, human resources, external and internal audit, income tax, and mergers and acquisitions for the bank.

Tim's success is an example for current accounting students, not only due to his professional success, but also because of his leadership in the community. As a member of First Baptist Church, Brandon, MS, Tim serves as a deacon and Sunday school teacher, and is past-chairman of the finance committee. He is also a member of the East Rankin Academy Board of Trustees.

Tim is married to Jeanine Johnson Gray (MC Class of '92) and they have three daughters, Haley, Hannah and Heidi.

Core value #1 on the bank's Corporate Code of Conduct is, "TO HONOR GOD IN ALL THAT WE DO." More than scripture on a sign, the bank's people and practices reflect this focus on values.